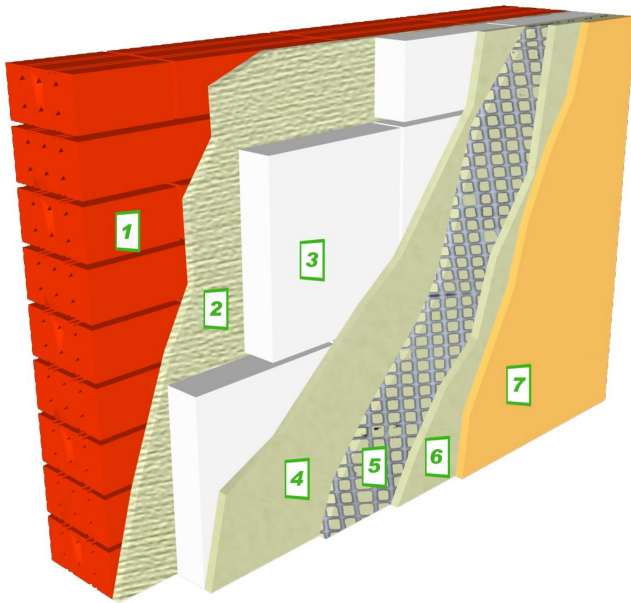




# CONCRESEAL<sup>®</sup>

## TH

### WATERPROOF FAÇADE MORTAR FOR APPLICATION OVER POLYURETHANE AND POLYSTYRENE INSULATION SURFACES



- 1** Substrate of Brick or Concrete Block.
- 2** Revoco o Capa de CONCRESEAL TH (Llana 6 mm)
- 3** Insulation Panel.
- 4** 1º Layer of CONCRESEAL TH
- 5** Glass Fibre Mesh.
- 6** 2ª Layer of CONCRESEAL TH
- 7** Coloured decorative finish with MAXSHEEN or MAXSHEEN ELASTIC

Solution of CONCRESEAL<sup>®</sup>-TH on insulation panels:

#### DESCRIPTION

Polymer modified cementitious coating for waterproofing of façades with polyurethane foam or polystyrene insulation panels. It only requires water for mixing and provides a highly attractive, efficient and inexpensive solution for the finish of insulation materials applied on façades.

#### APPLICATION FIELDS

- Coating, protection and waterproofing of form insulation on façades.
- Fixing of polystyrene foam panel on façades.

#### ADVANTAGES

- Water and weather resistant, very long durability compared to other paints because of its cement base.
- Waterproofs joints and provides a continuous and levelled surface.
- Excellent adhesion on insulation materials, no bonding agents required.
- Can be applied quickly by spray method with high coverages and savings in man-hours.
- Only needs water for mixing.
- Can be combined with an acrylic decorative coating such as **MAXSHEEN<sup>®</sup>** (Technical Bulletin nº 73) or **MAXSHEEN<sup>®</sup> ELASTIC** (Technical Bulletin nº 142).

## APPLICATION INSTRUCTIONS

### Surface preparation

The surface of the insulation boards must be free of dust, grease and loose or foreign elements. The boards shall be properly fixed to prevent any movement while the mortar is still fresh.

### Mixing

The material is mixed only with clean water, between 3,75 and 4,25 litres of water per each 25 kg bag. ( $16 \pm 1\%$ ), using a low speed mixing drill. Allow the material to rest for 5 minutes after mixing. Re-mix and the material is ready for application. For spray method application or at high temperature mixing water can be increased slightly.

### Application

Apply with a trowel at a rate of 3 to 4 kg/m<sup>2</sup> (about 2 mm thick) and while it is still fresh, place the reinforcement fibreglass mesh (140 gr/m<sup>2</sup>, 0,5 cm mesh) and press into the mortar. Apply a second coat also about 2 mm thick once the first layer has set to sufficient consistency for about 8 to 24 hours, depending on application conditions. Application can also be made by wet-mix spray method.

Final texture is obtained with a trowel or sponge float before the product hardens.

### Finish

For providing a decorative colour finish **MAXSHEEN**<sup>®</sup> or **MAXSHEEN**<sup>®</sup> **ELASTIC** can be used.

Allow at least 5 to 7 days, depending on ambient conditions, for the mortar to dry completely before applying the decorative finish.

**Surface preparation for placing insulation boards.** The insulation boards can also be fixed using **CONCRESEAL**<sup>®</sup> **TH**, as well as other fixing products in our range such as **MAXKOLA**<sup>®</sup> **FLEX**, or **MAXFIX**<sup>®</sup>. Other fixing methods whether mechanical or bonding agents can also be used.

The surface to be treated must be free of dust, grease and loose or foreign elements. Apply with a toothed trowel (6 mm) over the whole surface and place the insulation boards. Allow at least 24 hours with auxiliary fixing elements before application of exterior coating.

### Application conditions

The optimum temperature range for application is from 10 to 25 °C.

In winter, do not apply below 5 °C or if such temperatures are expected within 24 hours after the application. Do not apply on frozen or frosted surfaces.

Do not apply **CONCRESEAL**<sup>®</sup> **TH** if rain is expected within 24 h after the application.

### Curing

For a better curing at high temperatures, apply a fine mist water spray within 2 hours after placing **CONCRESEAL**<sup>®</sup> **TH**.

### Cleaning

All tools and equipments should be cleaned immediately with water after use. Once it hardens, can only be removed by mechanical means.

## PACKAGING

**CONCRESEAL**<sup>®</sup> **TH** is supplied in 25 kg bags. It is available in white colour. Other special light colours can be manufactured by request.

## STORAGE

Twelve months in its original unopened packaging. It must be stored in a dry and covered place, protected from humidity and freezing, with temperatures above 5 °C.

## SAFETY AND HEALTH

**CONCRESEAL**<sup>®</sup> **TH** is non-toxic but it is an abrasive compound. Protective rubber gloves and safety goggles must be used to mix and apply. In case of skin contact, wash affected areas with water and soap. In case of eye contact, rinse thoroughly with clean water but do not rub. If irritation persists consult a doctor. Safety Data Sheet of **CONCRESEAL**<sup>®</sup> **TH** is available by request.

The final user is responsible for the disposal of the product and its empty packaging, disposal must be made according to official regulations.

## TECHNICAL DATA

Appearance	White powder
Dry density (gr./ cm <sup>3</sup> )	1,25 ± 0,05
Maximum aggregate size (mm)	0,63
Mixing water (%)	16 ± 1
Pot life at 20°C (min)	30 - 45
Setting time at 20 °C (hours)	
Initial	2 – 3
Final	4 – 5
Consumption per coat approx. (kg/ m <sup>2</sup> )	3 – 4
Thickness per coat approx. (mm)	1,5 - 2
Adhesion	Very good (Breaks the substrate)

## GUARANTEE

The information contained in this leaflet is based on our experience and technical knowledge, obtained through laboratory testing and from bibliographic material. **DRIZORO<sup>®</sup>, S.A.** reserves the right to introduce changes without prior notice. Any use of this data beyond the purposes expressly specified in the leaflet will not be the Company's responsibility unless authorised by us. We shall not accept responsibility exceeding the value of the purchased product. The data shown on consumptions, measurement and yields are for guidance only and based on our experience. These data are subject to variation due to the specific atmospheric and jobsite conditions so reasonable variations from the data may be experienced. In order to know the real data, a test on the jobsite must be done, and it will be carried out under the client responsibility. We shall not accept responsibility exceeding the value of the purchased product. For any other doubt, consult our Technical Department. This version of bulletin replaces the previous one.



### **DRIZORO, S.A.**

C/ Primavera 50-52 Parque Industrial Las Monjas  
28850 TORREJON DE ARDOZ – MADRID (SPAIN)  
Tel. 91 676 66 76 - 91 677 61 75 Fax. 91 675 78 13  
e-mail: [info@drizoro.com](mailto:info@drizoro.com) Web site: [drizoro.com](http://drizoro.com)

ISO 9001  
ISO 14001

**BUREAU VERITAS**  
Certification



n° 6003176 / 6003176-MA